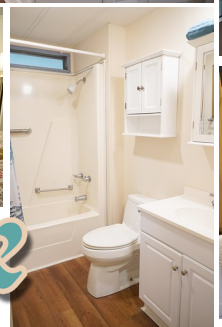
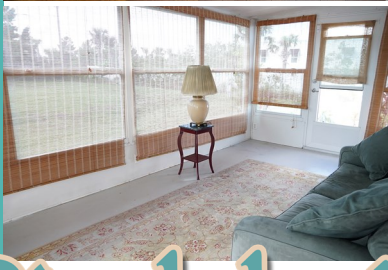


196 Emerald Drive

For
SALE

Home size: 24' x 48'
Square Feet: 1,152 S/F
Porch/Extra S/F: 240 S/F
Year: 1978
Bedrooms: 2
Bathrooms: 2
Furnished: No
Flooring: Vinyl Plank
Laundry: In Shed
Applianc/Equip: Refrigerator, micro, range, washer/dryer
Lot Desc: Interior
Lot Size: 4,524 S/F
Irrigation Well: No
Assoc Fee (Optional): \$10.00/yr
Monthly Lot Rent: \$724.00
(includes cable, garbage, & amenities)



Pinelake Village

A 55+ Manufactured Housing Community



- Light, bright and open plan. Ready to move in!
- Beautiful rich colored vinyl wood plank flooring throughout. Freshly painted inside and out
- Master bathroom remodeled except shower
- Large shed! Sun room adds additional living space with access to back patio



Please visit our website for additional info & pictures www.PinelakeVillage.com



Please call to arrange a private viewing **Vicki Mattucci, Sales Agent** 772-201-2685 cell or 772-334-1414 office